

CORE RETURN POLICY—PENCIL INJECTORS

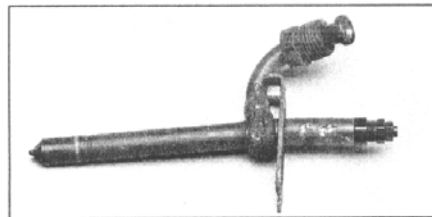
The injector body cannot be bent or bowed. The injector tips cannot be damaged in any way nor can the slots on the side of the injector body be damaged. The injector body must be a current style body. Some of the early style bodies have been updated; therefore, the early styles cannot be accepted as a core. See below.



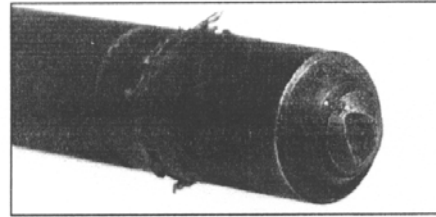
The injector on left is missing its nozzle and is unacceptable.



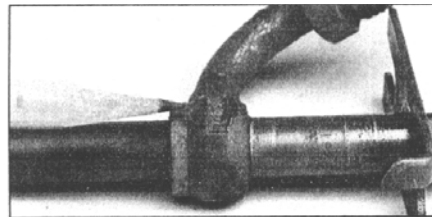
Repaired injector arms or body parts are unacceptable.



Bent or broken pencil injector cores are not acceptable.



Damaged tips or injector cores are unacceptable.



Excessive damage to the injector body is not acceptable



Normal style tip



Early style tip—this is not an acceptable core (John Deere cores only)

ENGINE CORES

The engine cores are graded depending upon the condition of the crankshaft, cylinder block, and cylinder head.

OIL PUMP CORES

Any core that is locked up or seized is not an acceptable core. The cores for the RP735249C91 oil pump must contain a one inch wide rotor and housing to match.

TURBOCHARGER CORES

As long as the turbocharger has not been disassembled (which may be returned with missing parts) and has not been in a fire, a core credit can be issued. On a few applications there may be a core grading curve (the worse the core condition, the less the core charge refund).